



# Improving and Developing Subsea technology

## ID subsea Pan Tilt system

### ELECTRONIC BENEFIT

The system has been designed to be adjustable for any ROV system, power supply and communication protocol can be configured specially for your system. Our connector design avoid damages to the main cable helping to save money with cables.

### MECHANICAL BENEFIT

This system has a exclusive design, developed to transfer movement without need a axis coming out of the housing, the magnet couple give the option to operate without any compensation.

### MODULAR SYSTEM

The system can be installed in a lot of different positions and configuration, with a modular design we can separate the pan and tilt to operate separately or install more than one together using the same rs232 channel.

For more information on any of our products or services please visit us on the Web at:  
[www.IDsubsea.com](http://www.IDsubsea.com)



### Description

The ID subsea Pan Tilt is designed in a modular configuration, using high precision step motors and professional PCB's.

Inside the housing the motor has a planetary gearbox that can give torque up to 30Nm by axis.

The material of the housing is SS316, which give the system protection against corrosion and make the system capable to operate at 3000m depth. The exclusive system to transfer the movement using magnet couple prevents rusting and water ingestion, and avoids the use of compensation.

Communication is supported thought Rs232, Rs422 and Rs485 protocols, the Bluetooth joystick give the operator mobility to allocate it on the best position on his operation bench.

This system is designed and manufactured using 100% Brazilian technology and knowledge; we can supply your operations with equipments and spare parts without import parts, giving you the best subsea equipment support on Macae oil field.

## System Innovation

### • Easy electronic installation:

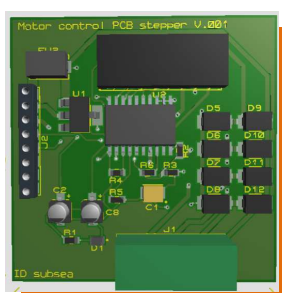
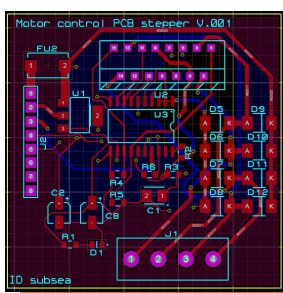
- Mobile joystick; wireless adaptor to connect the joystick wireless to the RS232 ROV Mux.
- No software dependent.
- Easy string configuration, to adapt to any ROV software (costumer selectable).

### • Easy Mechanical:

- No compensation needed.
- Modular system, you can separate the parts and install in any way you want.
- Separated cable between P and T, this avoid damaged the cable to the ROV.

### Features Available

Corrosion Resistant SS316  
Easy Installation and Setup  
Easy Maintenance and parts supply  
Software Support  
Hardware Support  
3000m Depth Rating



**IDsubsea**

Improving and Developing Technology

37 - R. Joao Parocinio  
Riviera, Macae RJ  
Phone 55 22 9 8160 9694  
E-mail:  
[renan.ocampo@idsubsea.com](mailto:renan.ocampo@idsubsea.com)



# Improving and Developing Subsea technology

## Specification – ID subsea pan Tilt

### Mechanical:

- Dimensions: 120 mm dia / 298 mm / 390mm
- Weight in Air: 9 Kg
- Weight in Water: 6 Kg
- Position Limits: +- 160 Pan +- 120 Tilt

### Electrical:

- Input Voltage: 24VDC, 48VDC, 110VAC
- Maximum Current: 1,8A (Costumer Selectable).
- Maximum output Torque: 20Nm (Costumer Selectable).
- Maximum speed: 1.5deg to 7.5deg
- Communication: RS232, RS422, RS485
- Subsea connector: Costumer Selectable

### Environmental:

- Operation depth: Up to 3000m ( Lower options )
- Temperature range: -20C to 50C
- Housing Material: Stainless steel 316 (Costumer Selectable).
- O-ring Material: Buna rubber.

### ELECTRONIC BENEFIT

The system has been designed to be adjustable for any ROV system, power supply and communication protocol can be configured specially for your system. Our connector design avoid damages to the main cable helping to save money with cables.

### MECHANICAL BENEFIT

This system has a exclusive design, developed to transfer movement without need a axis coming out of the housing, the magnet couple give the option to operate without any compensation.



IDsubsea

Improving and Developing Technology

37 - R. Joao Parocinio  
Riviera, Macae RJ  
Phone 55 22 9 8160 9694  
E-mail:  
renan.ocampo@idsubsea.com

